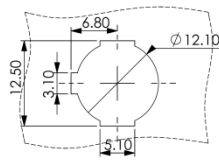
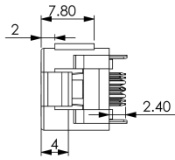
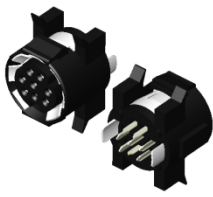
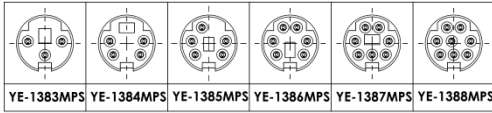
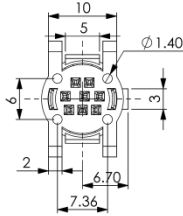
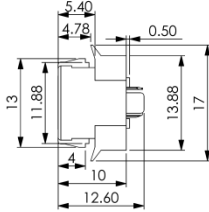
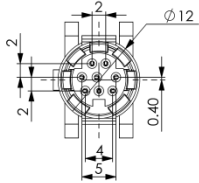


YE-138XMPS MINI DIN SOCKET PANEL MOUNT



Through Hole Dimension
t=0.85



MATERIAL :

1. SHIELD COVER :
PHOSPHOR BRONZE TIN PTD.
2. HOUSING :
PBT+GF15%
3. TERMINALS :
PHOSPHOR BRONZE SILVER PTD.

SPECIFICATION :

Rating :

100V AC 1A /12V DC 2A max.

Contact Resistance :

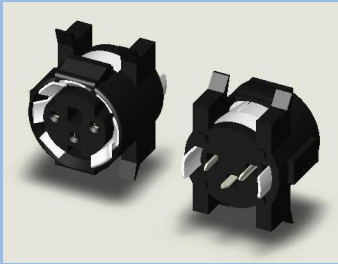
30mΩ max.

Insulation Resistance :

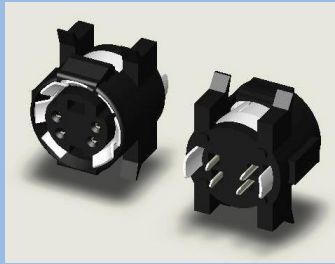
50MΩ at 250V DC min.

Voltage Withstand :

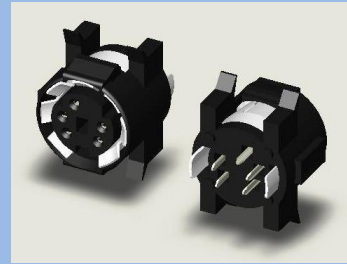
250V AC for 1 minute



YE-1383MPS



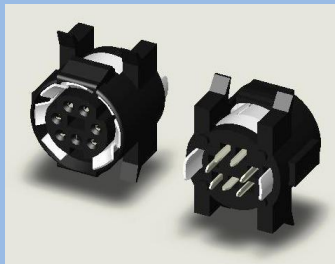
YE-1384MPS



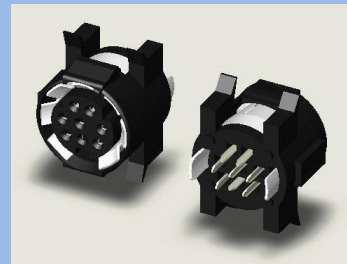
YE-1385MPS



YE-1386MPS



YE-1387MPS



YE-1388MPS